

BB02-YM

CUSTOMER PRODUCT SPECIFICATION SHEET



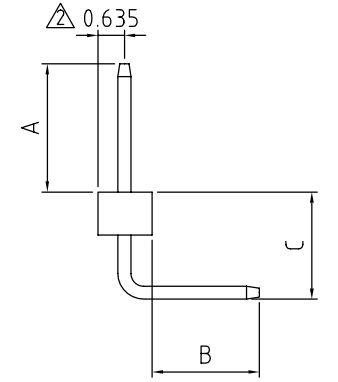
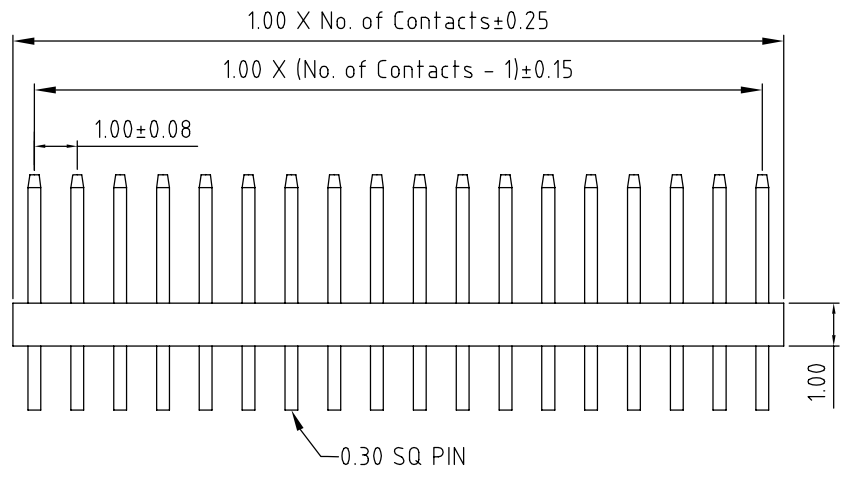
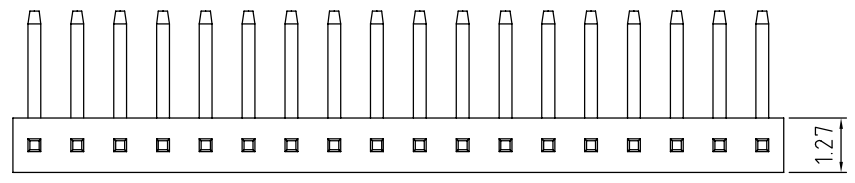
BB02-YM:- 1.00MM (0.039") PIN HEADER, SINGLE ROW, RIGHT ANGLE, THROUGH HOLE TYPE, 04 TO 40 CONTACTS

SPECIFICATIONS

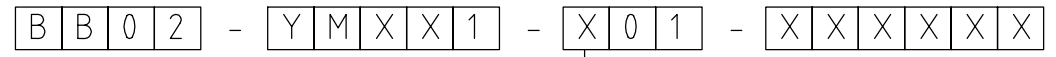
CURRENT RATING: 1AMP
 INSULATOR RESISTANCE: 500 MEGOHMS MIN.
 DIELECTRIC WITHSTANDING: AC 600 V
 CONTACT RESISTANCE: 20m OHMS MAX.
 OPERATING TEMPERATURE: -40°C TO +105°C
 CONTACT MATERIAL: BRASS
 INSULATOR MATERIAL: THERMOPLASTIC, UL 94V-0
 STANDARD: LCP
 PLATING: GOLD FLASH OR TIN OVER 30-50U" NICKEL
 SOLDERABILITY IR REFLOW: 280°C FOR 10 SEC
 WAVE: 250°C FOR 5-10 SEC
 MANUAL SOLDER: 380°C FOR 3-5 SEC

PACKAGING: LOOSE IN BOX.

MATES WITH: - BB02-WD
 BB02-WE
 BB02-WF



HOW TO ORDER



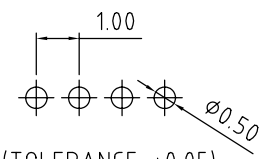
NO. OF CONTACTS
04 to 40

CONTACT PLATING OPTIONS
 K = GOLD FLASH (STANDARD)
 T = BRIGHT TIN
 M = MATT TIN

PIN LENGTH A (1/10mm)
 PLEASE SPECIFY PIN LENGTH REQUIRED
 I.E. 2.5mm = 25
 TOL. ±0.25mm
 STANDARD = 15

PIN LENGTH B (1/10mm)
 PLEASE SPECIFY PIN LENGTH REQUIRED
 I.E. 2.5mm = 25
 TOL. ±0.25mm
 STANDARD = 25

PIN LENGTH C (1/10mm)
 PLEASE SPECIFY PIN LENGTH REQUIRED
 I.E. 2.5mm = 25
 TOL. ±0.25mm
 STANDARD = 25



(TOLERANCE: ±0.05)
 RECOMMENDED PCB HOLE LAYOUT

REV. DATE & DRN
 1.0 20/02/09 - NYW RELEASE
 1.1 18/02/09 - NYW AMEND STANDARD A = 15.
 1.2 25/04/11 - NYW ADD PLANAR HEIGHT.

Scale: 8:1	THIRD ANGLE	 Unstated Tolerances: X ± 0.30 X ± 0.25 XX ± 0.15 .XXX ± 0.10	Material SEE NOTE
Drawn: NYW			NOT TO SCALE
App'd: XXX	Title: PIN HEADER		Unit: mm
Date: 25 APR '11	Revision: 1.2		

© THIS DRAWING IS CONFIDENTIAL AND MUST NOT BE COPIED OR DISCLOSED WITHOUT WRITTEN CONSENT

Type BB02-YM
BB02-YM
Drawing Number:
Sheet 1 of 1
Drawing © E and O E