

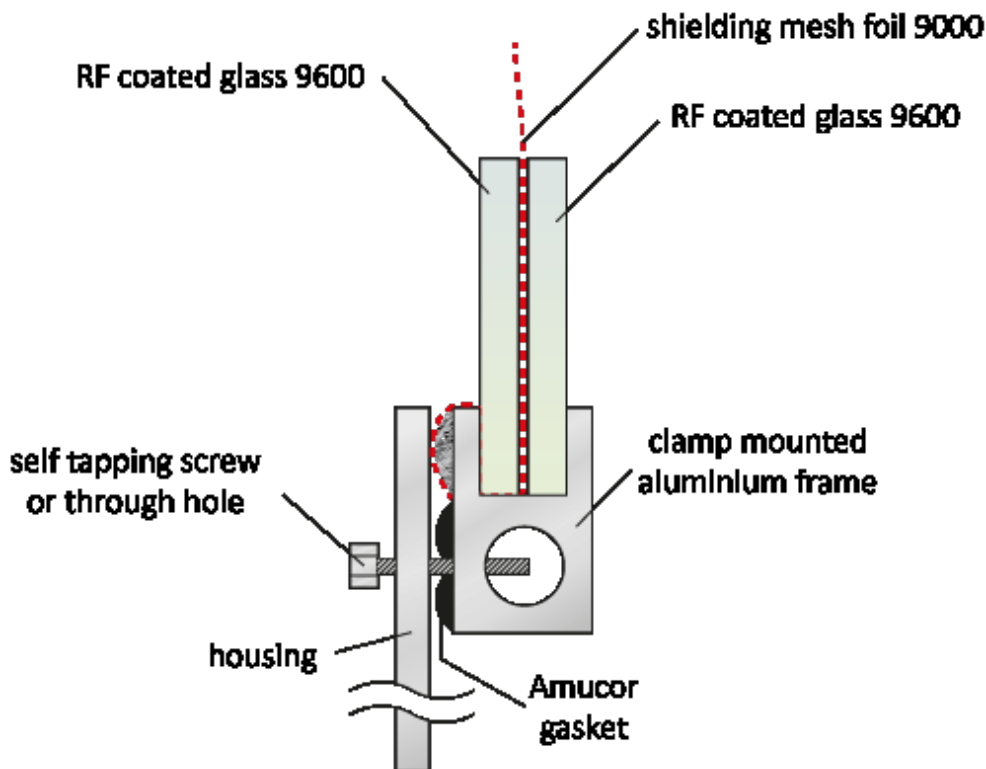
High performance Faraday cage windows

A Faraday cage window is composed of a series of EMI / RFI shielding product

We use two layers of 9600 series EMI / RFI shielded glass interspersed with 9000 series Mesh foil to ensure a very high shielding performance in a wide frequency range.

These three layers are pressed together in an aluminum frame for easy installation. The aluminum frame is provided with an electrically conductive 6800 series Amucor gasket to ensure good electrical contact with the Faraday cage.

Standard Faraday cage window technical drawing



Faraday cage window technical drawing

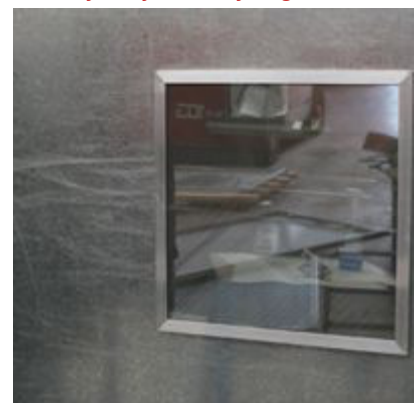
Below you will find some pictures to illustrate the possibilities



Heavy duty Faraday cage windows



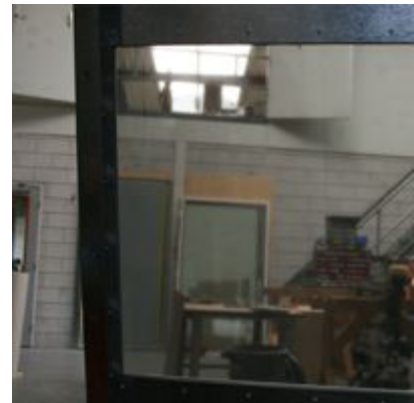
Heavy duty Faraday cage windows



Standard faraday cage window, outside view

High performance Faraday cage windows

Product	Width (mm)	Height (mm)
Faraday cage window	<input type="text"/>	<input type="text"/>
	Specify the width in mm including the frame.	Specify the height in mm including the frame.



Standard faraday cage window, inside view



MRI window (Ready to solder into the Faraday cage)