

8200 - Connector gasket

The 8200 series Connector gaskets are die-cut gaskets for EMI shielding and for grounding of a wide range of connectors. These new connector gaskets are more effective in closing gaps caused by fabrication tolerances and misaligned or irregular surfaces than could be achieved with a solid flange design.

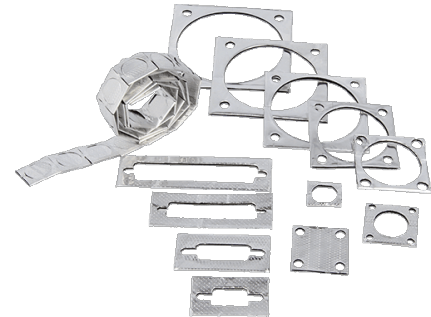
The 8200 series Connector gasket is made of die-cut 6800 Amucor shield or conductive textile, is 1 or 2 mm thick, and can be provided with self-adhesive.

Custom-made connector gaskets

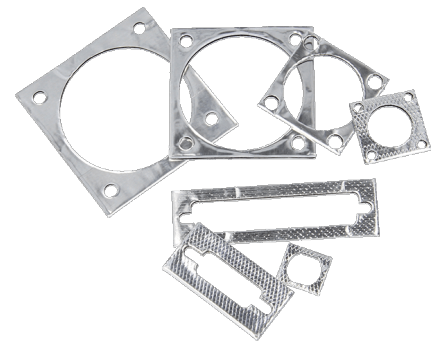
Connector gaskets can also be fashioned to any desired size or shape. To receive a quote, please email your drawing and quantity desired to info@hollandshielding.com.



A connector gasket is intended for sealing the space between the connector and the electronics housing



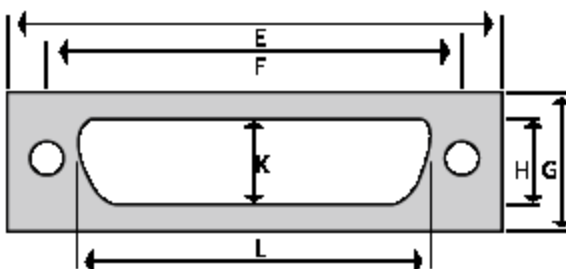
Connector gaskets can be made in almost any shape and size



Detailed examples

Standard dimensions

Sub-D connector gaskets



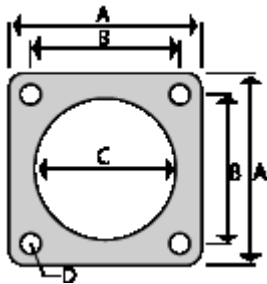
Technical drawing Sub-D connector gaskets

Produkt anfragen

8200 - Connector gasket

Shell size	Dimensions in mm				Front mounting Rear mounting			
	E	F	G	H	L	K	L	K
9	33.35	25.00	19.05	3.56	19.86	11.43	16.89	9.40
15	41.68	33.33	19.05	3.56	28.20	11.43	25.22	9.40
25	55.58	47.04	19.05	3.56	41.91	11.43	38.94	9.40
37	71.86	63.50	19.05	3.56	58.37	11.43	55.40	9.40
50	69.60	61.11	21.85	3.56	55.88	16.82	53.01	12.19

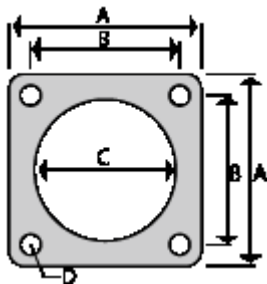
RF connector gasket



Technical drawing RF connector gaskets

Connector type	Dimensions in mm			
	A	B	C	D
BN	17.45	12.70	11.10	2.77
BNC	17.45	12.70	11.10	2.77
C	25.40	18.26	15.88	4.37
HN	30.18	23.01	19.05	3.56
LC	50.80	36.50	31.75	6.53
N	25.40	18.26	15.88	4.37
UHF	32.54	24.61	25.40	4.37

JT, PT, PC, MIL-C-26482, MS-3110, MS-3112, MS-3119, MS-3120 connector gaskets

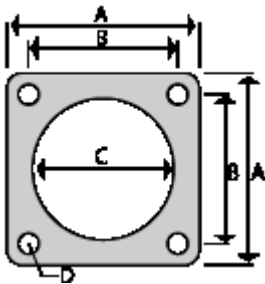


Technical drawing Connector gaskets

Part number	Dimensions in mm			
	A	B	C	D
8206	17.48	11.91	9.53	3.30
8208	20.62	15.09	12.70	3.30
8210	23.83	18.26	15.88	3.30
8212	26.19	20.65	19.05	3.30
8214	28.56	23.01	22.23	3.30
8216	30.96	24.61	25.40	3.30
8218	33.32	27.00	28.56	3.30
8220	36.53	29.36	31.75	3.30
8222	39.70	31.75	34.93	3.30
8224	42.88	34.93	38.10	3.96

AN, HT, QWL, MIL-C-5015, MS3100, MS3102 connector gaskets A series

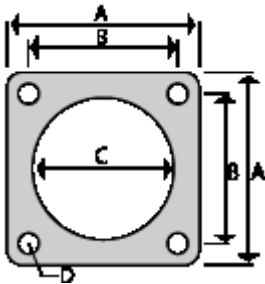
8200 - Connector gasket



Technical drawing Connector gaskets A series

Part number	Dimensions in mm			
	A	B	C	D
8208A	22.23	15.09	12.70	4.37
8210A	25.40	18.28	15.88	4.37
8212A	29.79	20.65	19.05	4.37
8214A	30.16	23.01	22.23	4.37
8216A	32.54	24.61	25.40	4.37
8218A	34.93	27.00	28.56	5.15
8220A	38.10	29.36	31.75	5.15
8222A	41.28	31.75	34.93	5.15
8224A	44.45	34.93	38.10	5.15
8228A	50.80	39.70	44.45	5.15
8232A	57.15	44.45	50.80	5.56
8236A	63.50	49.23	55.58	5.56
8240A	69.85	55.58	61.93	5.56
8244A	76.20	60.33	70.64	5.56
8248A	82.55	66.68	76.99	5.56

Bendix-SP connector gaskets B series



Technical drawing Connector gaskets B series

Part number	Dimensions in mm			
	A	B	C	D
8206B	24.21	16.28	9.53	4.06
8208B	26.59	18.64	12.70	4.06
8210B	28.56	20.62	15.88	4.06
8212B	31.75	23.83	19.05	4.06
8214B	34.93	26.19	22.23	4.06
8216B	36.50	28.56	25.40	4.06
8218B	38.51	30.56	28.56	4.06
8220B	42.47	32.94	31.75	4.06
8222B	44.45	34.93	34.93	4.06

C series